

COMPANY PROFILE



Pre-Engineered For
A Better Future



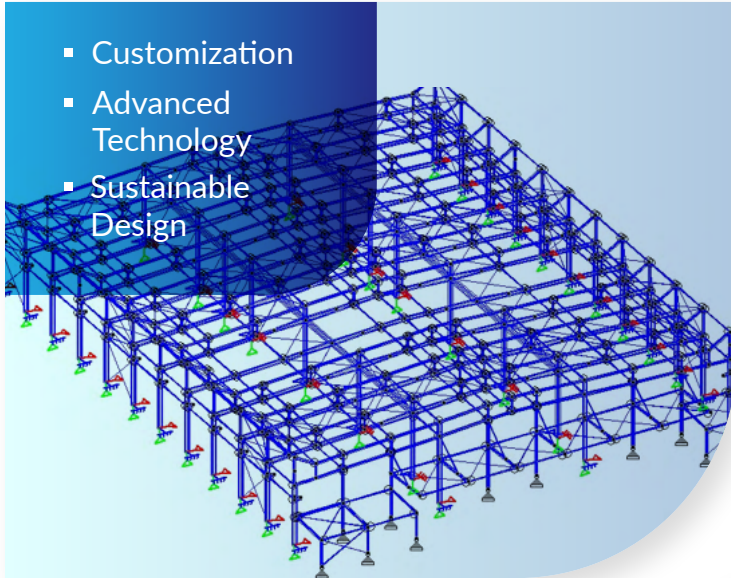
Inspired by



Our Business Philosophy

Create | Construct | Care

Adoriva's philosophy reflects the company's comprehensive approach to Pre-Engineered Building (PEB) manufacturing, highlighting Innovation, Execution, and Responsibility in every project we undertake.



Create represents the commitment to innovation, from the design phase to the final product. Every project begins with a vision that aligns with the client's specific needs, pushing the boundaries of traditional construction to offer modern, efficient, and sustainable PEB solutions.

Construct reflects the expertise and precision that Adoriva brings to the actual building process. From fabrication to on-site assembly, Adoriva ensures that each step in the construction process is carried out with the highest standards of quality and efficiency.



Care is central to Adoriva's relationship with its clients, employees, and the environment. It reflects the company's commitment to providing exceptional service and support throughout the lifecycle of each project, ensuring long-term success and satisfaction.

Who We Are



At Adoriva Infratech Pvt. Ltd., we specialize in delivering innovative, efficient, and sustainable Pre-Engineered Building (PEB) solutions that redefine modern construction. Founded with a vision to lead the future of infrastructure, we combine advanced technology with industry expertise to create tailored, high-quality PEB structures for a diverse range of industries.

With our roots in engineering excellence, we aim to transform the way buildings are designed, manufactured, and assembled. Whether it's industrial warehouses, commercial spaces, or customized structures, Adoriva stands for speed, precision, and durability, offering cost-effective solutions that meet the unique demands of each client.

Our Vision

To be a global leader in providing strong, stylish, affordable and end to end Pre-Engineered Building (PEB) and erection commissioning services.

Our Mission

To provide timely, lasting and one stop economical solution for building construction, steel fabrication and crane erection services.

Our Values

- **Excellence:** We strive for the highest standards in engineering, design, and execution.
- **Integrity:** We build trust by being transparent and delivering on our promises.
- **Innovation:** Continuous improvement and technological advancements are at the heart of everything we do.
- **Customer-Centric:** We place our clients at the core of our operations, ensuring that their vision and needs are fully realized.
- **Sustainability:** We are committed to creating environmentally responsible structures that minimize the ecological footprint.

Adoriva Advantage

Customized PEB Solutions:

Tailor-made Pre-Engineered Buildings designed to meet the specific needs of various industries.



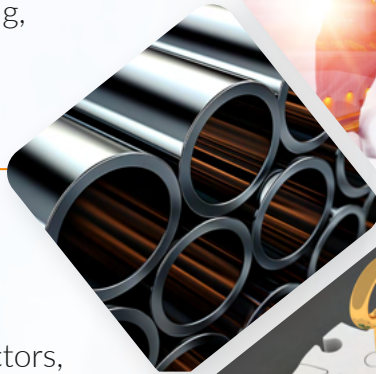
Faster Construction:

Reduced project timelines with off-site fabrication and rapid on-site assembly, ensuring quick delivery.



High-Quality Materials:

Use of premium-grade steel and durable components ensures long-lasting, low-maintenance structures.



Turnkey Solutions:

End-to-end services from design and manufacturing to installation and post-project support.



Versatile Applications:

Expertise in a wide range of sectors, including industrial, commercial, agricultural, Warehousing and institutional projects.



Customer-Centric Approach:

Dedicated client support and a commitment to exceeding expectations throughout the project lifecycle.



Our Capabilities



Design, manufacturing and supply of Pre-Engineered Buildings and Light to Heavy Steel Structures.



In-house design & engineering office at Chakan-Pune with highly skilled and certified designers and detailers.



Experienced team coming from reputed institutions such as IIT, IISC, JNTU, RITES and known third-party design establishments .



Thorough working knowledge of design codes such as IS 800:1984 WSD, IS 800: 2007 LSD AISC, MBMA & BS.



ISO Certification 9001:2015, ISO 45001:2018. ISO 14001:2015.



State-of-the-art manufacturing facility in Chakan- Pune, India, with a production capacity of 12000 MTPA.

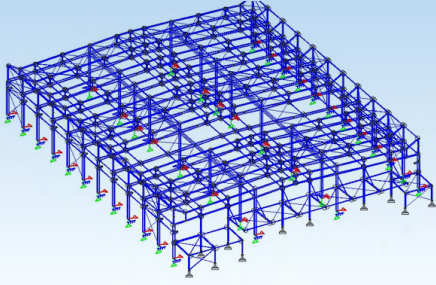


Global footprint- PEB exporter of steel construction projects from India to the world inspired by the Make In India.

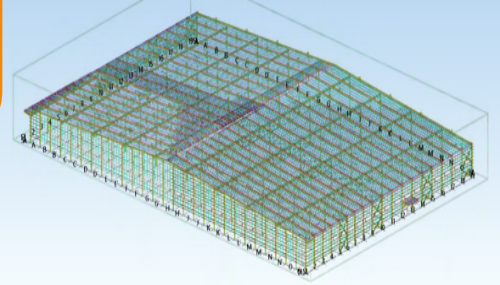


Our Services

3D STAAD
Model

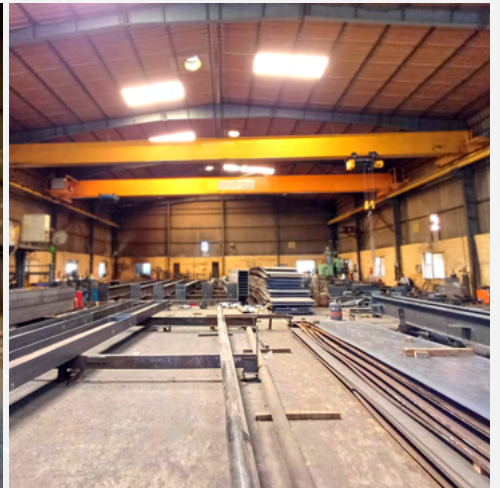


3D TEKLA
Model



Design

- Highly skilled (Design, Detailing & Checker).
- Licenced version of STAAD Pro, TEKLA, BOCAD, AutoCAD.
- Expertise in Design with Indian codes & American Codes.



Fabrication

- Sophisticated Plasma, H Beam line, Sand Blasting & Painting Machineries.
- Monthly Production Steel 1200 MT, Secondary 200 MT, Sheeting 200 MT.
- Our Quality team ensures perfection in fabrication.

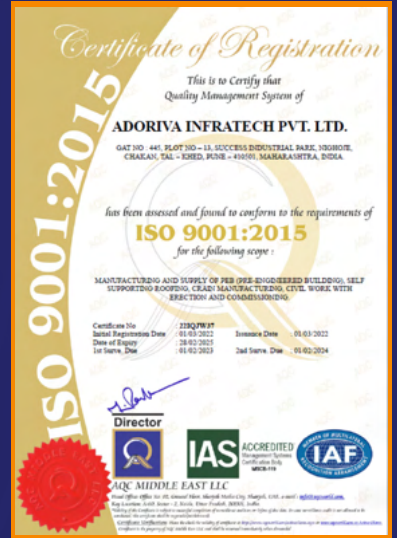
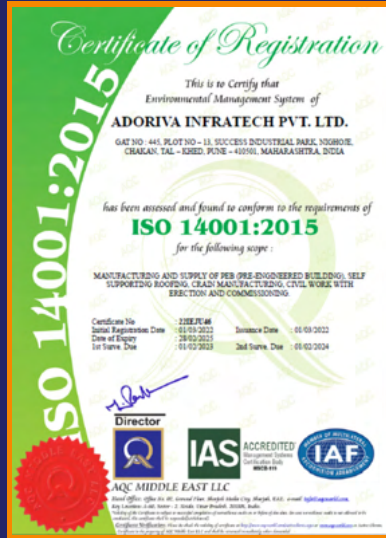


Erection

- Skilled and Certified erection team for site management.
- Safety Supervisor ensures all safe working practices at site.



Certificates



Safety Practices
Safety is a Culture, Not Just a Department

What We Offer

Primary Structural Members

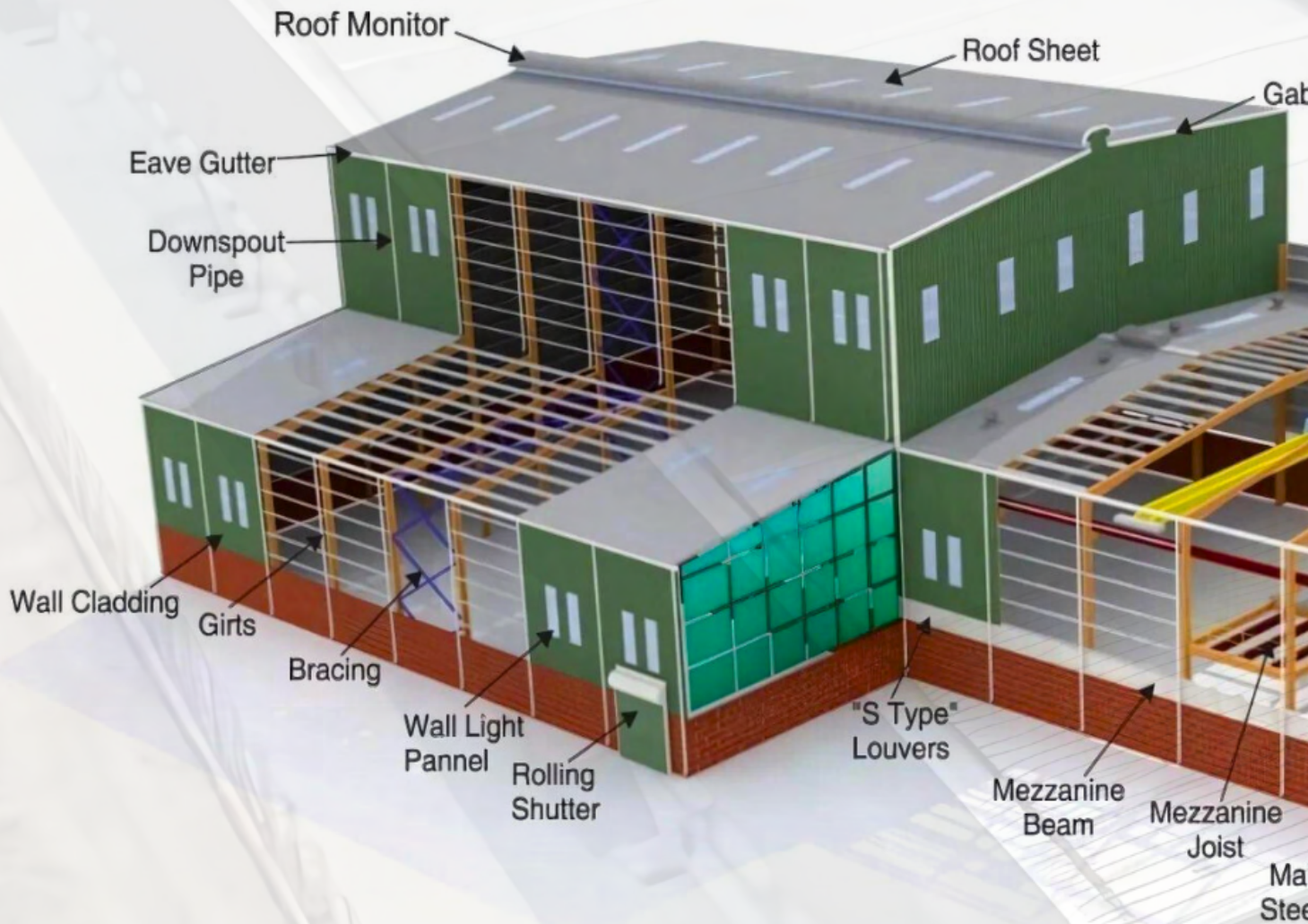
- Main Frame Columns End-wall Posts.
- Rafters Solid Web (Open Web Other Main Support Members).

Secondary Structural Members

- Purlins & Girts
- Eave Strut
- Cable
- Angle
- Pipe
- Built-up
- Rod Bracing
- Wide Bay Truss Purlins (Coll Formed/HR)

Claddings

Pre-painted Galvalume (Alu-Zinc) Sheeting is a multi-layer coated profile with environment specific paints coating and is available with or without Insulation. PPGL panels are offered with wide range of coatings namely RMP, SMP, SDP, PVDF communicated with project location.





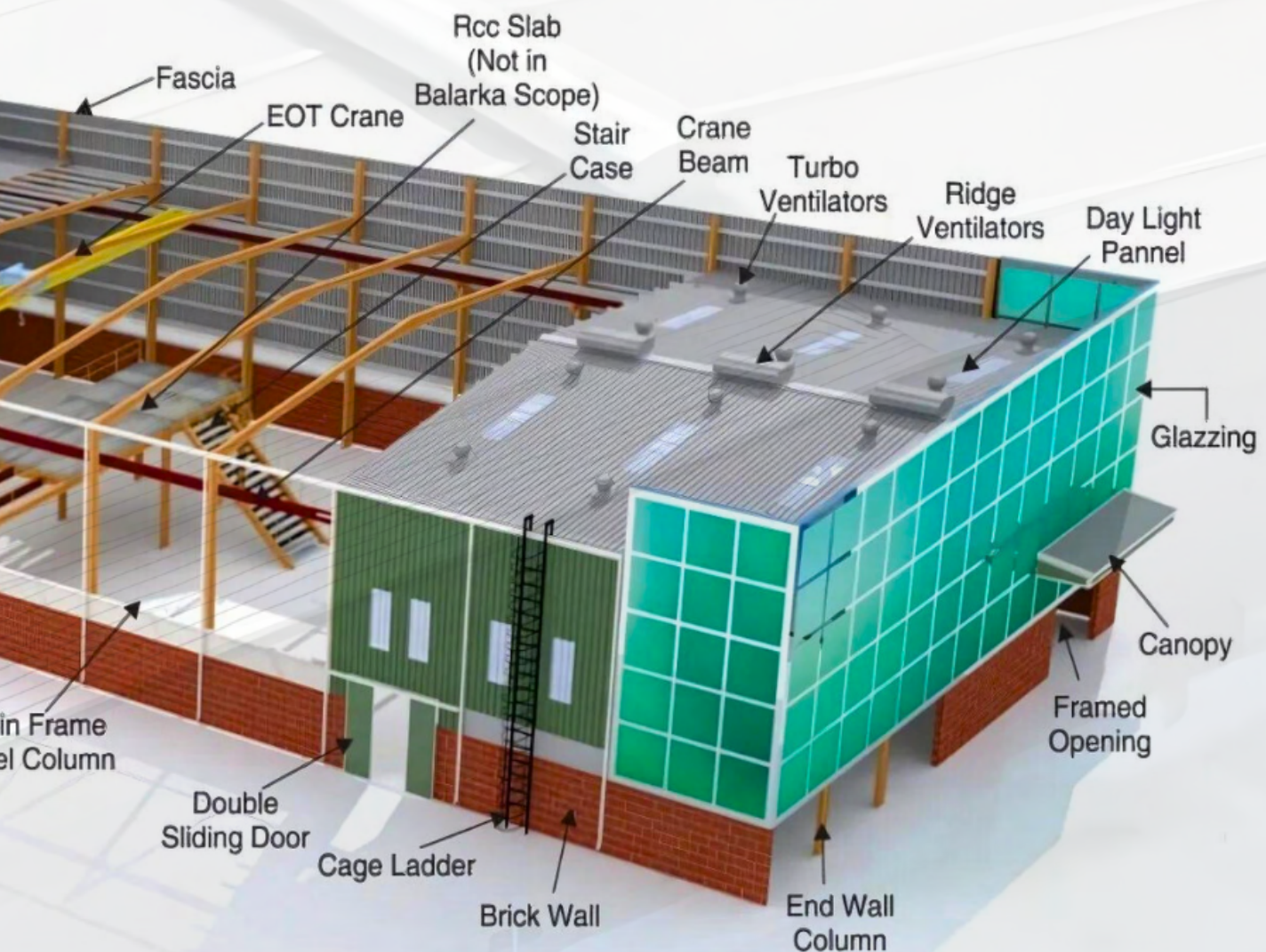
INTERLOCK 360 (Standing Seam Roof-SSR)

- Leakproof Zero Maintenance, Inter-locking.
- Panels 360 Mechannibal Seam.
- 3 Deep Crest Full Seamed Roof Cleat.
- Factory-made SSR.

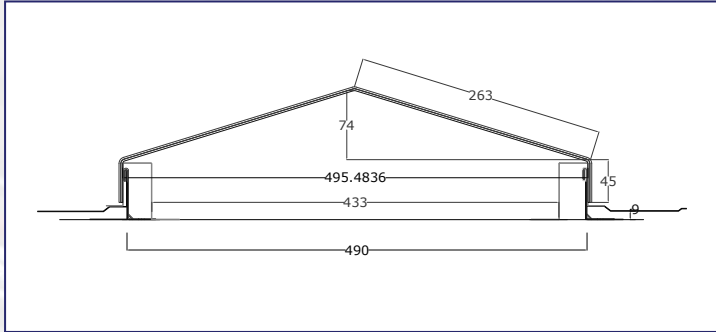
Accessories

- Sliding Doors
- Mastic Tape Walk Way Doors
- Insulation
- Glazing Windows Roof Curb
- Fixed Ventilators
- Roof Jack
- Turbo Vents Roll-up Doors
- Ridge Vent Sealant

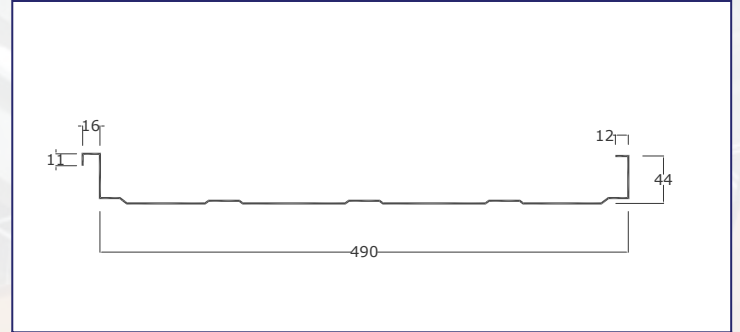
ble Trim



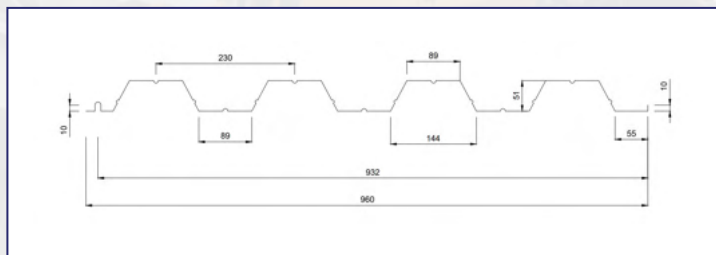
Our Products and Services



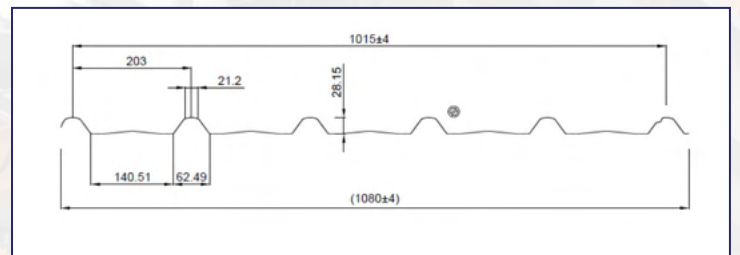
SSR Polycarbonate Sheet



SSR Profile



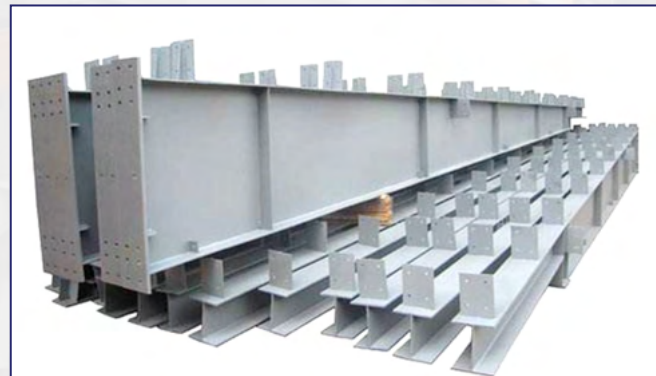
Deck Sheet Profile



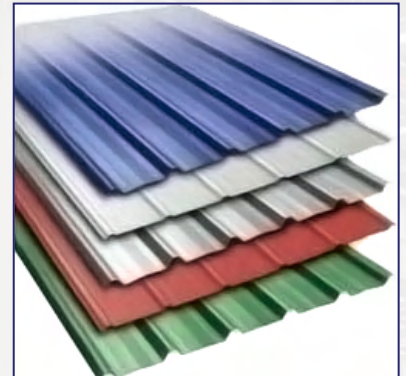
Screw Down Wall and Roof Profile



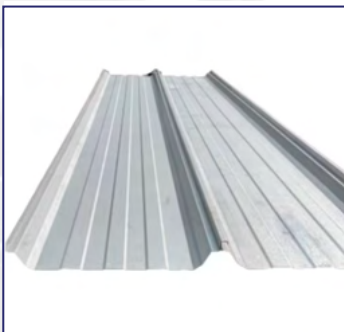
C and Z Section



Primary Structural Member



Colored Sheet



Standing Seam Sheet



Deck Sheet



Turbo Vent

Site Pictures



M/S Swati Moulds and Dies

▪ Location : Chinchwad, Pune

▪ Construction Size : 55,000 Sq. Ft (G+2)



M/S Atlas Copco.

▪ Location : Talegoan, Pune

▪ Construction Size : 245,000 Sq. Ft.

Some of Our Projects



ESR

- Location : Chakan, Pune
- Construction Size : 275,000 Sq. Ft.



Miki Pulley

- Location : Talaja, Mumbai
- Construction Size : 90,000 Sq. Ft.



JCB

- Location : Talegaon, Pune
- Construction Size : 21,100 Sq. Ft.



Winoa x 2Effe

- Location : Talegaon, Pune
- Construction Size : 60,000 Sq.Ft.



Steri India

- Location : Talegaon, Pune
- Construction Size : 26,000 Sq.Ft.



Divgi India

- Location : Shirval, Pune
- Construction Size : 145,000 Sq. Ft.

Industries We Serve

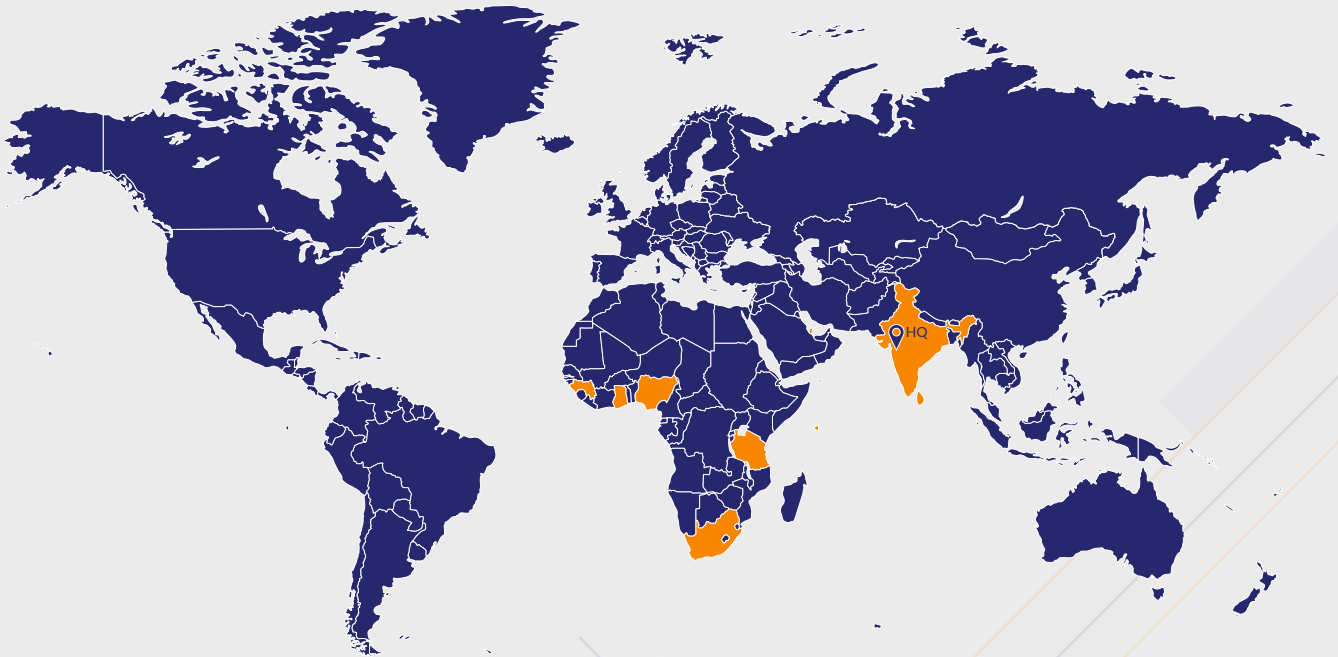


Brands That Have Trusted Us



Create
Construct
Care

Our Global Presence



Adoriva Infratech Pvt. Ltd.

Factory : GAT No. 10, Plot No. 13, Success Industrial Park,
Nighoje, Chakan, Tal Khed, Pune - 410501

Contact : +91 90117 33700 | +91 76669 64553

Email : sales@adorivainfra.co.in

Website : www.adorivainfra.co.in

Inspired by

